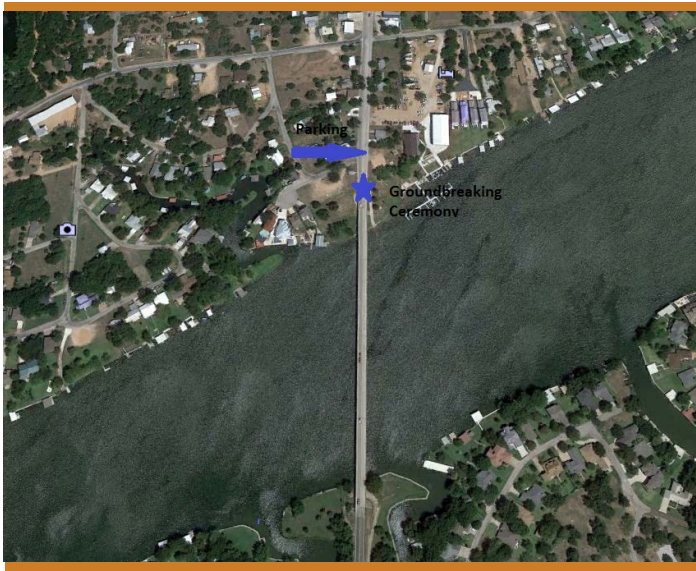


YOU'RE INVITED

Groundbreaking Ceremony for the RM 2900 Bridge Replacement Project Friday, Nov. 9, 2018 at 11 a.m.

The ceremony will take place on the north side of the Llano River arm of Lake LBJ



DRIVING DIRECTIONS

From **RM 1431**, head south on RM 2900 toward the bridge. Parking is on the east side of the road just before the barricades.

We hope you can join us for this celebration!

RSVP to Brad Wheelis at bradley.wheelis@txdot.gov

